



## CLASSES

2WD JUNIOR STOCK  
2WD STOCK  
2WD MODIFIED  
4WD STOCK  
4WD MODIFIED  
2WD STADIUM TRUCK  
2WD SHORT COURSE TRUCK

## EVENT DETAILS

21-23 JUNE 2024  
CHARGERS RC CLUB  
ANDRE RIPPOLL PARK  
CAROLE PARK IPSWICH QLD  
ENTRIES CLOSE SUN 16<sup>TH</sup> JUNE  
[WWW.CHARGERSRC.NET](http://WWW.CHARGERSRC.NET)



## Event Major Sponsors

Without the generous support of the sponsors below, this event would not be possible.



## Club Supporters

Please support the businesses that support us and allow our club to run events like the State Titles. Please consider them when making your next purchase.



## Location

Chargers RC is located within Andre Rippoll Park in Carole Park, QLD with direct roadside access from Cobalt Street.

## Address

215 Cobalt Street, Carole Park, Queensland 4300 (see map below).

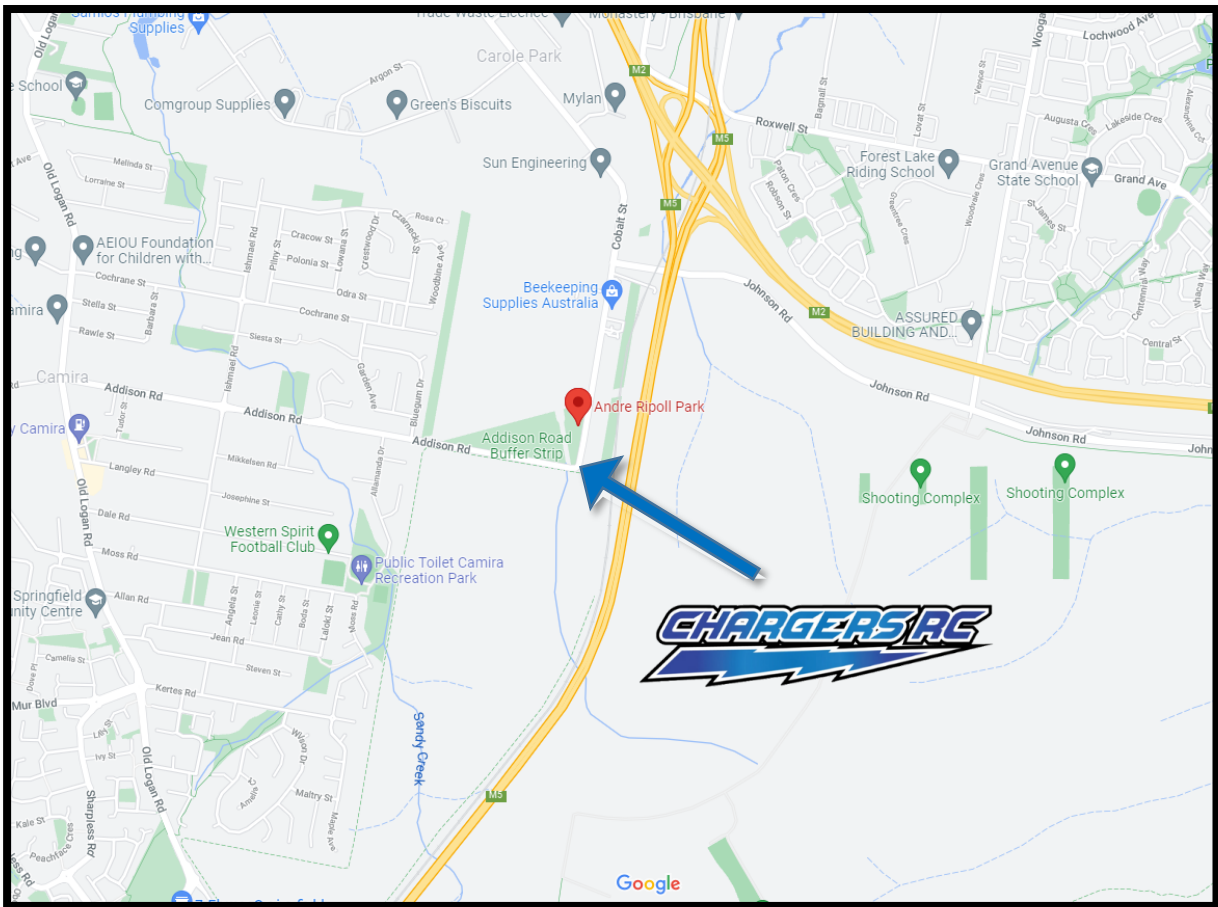


Figure 1 - Track Location

## Parking

Parking is available at the track (primarily roadside with some parking to be made available onsite in the paddock next to the track). No parking will be allowed within the designated pit areas. Competitors may choose to drop off their equipment then park their car a short distance away from the pits.



## Key Dates, Entries and Fees

### Key Dates

**Entries Open - 22<sup>nd</sup> April 2024**

**Sunday 16<sup>th</sup> June**- Entries Close at midnight (or sooner if class filled)

**Monday 17<sup>th</sup> to Thursday 20<sup>h</sup> June - TRACK CLOSED!**

**Friday 21<sup>st</sup> June**– Sign-in, Practice and Pre-Scrutineering

Timing from **9am to 5pm**. This will be a controlled practice per class.

**Saturday 22<sup>nd</sup> June**– 2wd Junior Stock, 2wd Stock, 2wd Mod, and Short Course Truck.

Drivers briefing to commence at **7:30am**, the day is expected to finish by 5pm.

**Sunday 23<sup>rd</sup> June**– 4wd Stock, 4wd Mod, Stadium Truck

Drivers briefing to commence at **7:30am**, the day is expected to finish by 5pm.

### Entries

Entries must be submitted via the online Race Registration form available on the Chargers RC website ([www.chargersrc.net](http://www.chargersrc.net)). No paper form is available. Entries will be capped per class with remaining spots available displayed on the entry form. Payment can be made via PayPal (incl. Debit/Credit Cards) or via Direct Deposit to the details below:

Chargers RC

BSB: 014-274

A/C: 30-687-1239

Ref: *'Your Name'*

**Note: Race entries are pending until payment received. Payment must be completed by 21 May 2024.**

### Cross Entering

Cross entering is subject to RCRA Rule 2.7.4

- No cross-entering between buggy motor classes. A competitor may enter in any Stock Classes or in any Modified Classes but not both (see RCRA rule 2.7.4a)
- Cross entering Stadium Truck or Short Course Truck classes **IS** allowed.
- No cross-entering between 2WD Junior Stock and 2WD Stock. NOTE: cross-entry between 2WD Junior Stock and 4WD Stock is allowed.



## Registration Fees

First Class	\$40
Additional Classes (each)	\$30
Junior 2WD Buggy	\$20

## Refunds

Where an entrant withdraws from the event **before** 1 June 2024, they will be entitled to a full refund.

Entrants who withdraw from the event **after** 1<sup>st</sup> June 2024 or who do not show up, will **not** be entitled to a refund. The host club **may** use their discretion to consider special circumstances for refund (See RCRA rule 2.8.15).

**NB:** Competitors who have not entered by the entry close date **will not** be graded and will be placed in the last heat in their class subject to availability. **No exceptions.**

## Race Format and Scrutineering

### Qualifying

- 4 rounds of qualifying per class
- 1 warm-up lap then 5 minutes per round + final laps
- Drivers reseeded after Q2 based on results (i.e., top drivers grouped together)
- Maximum 10 drivers per qualifying heat
- IFMAR staggered start
- 1 number sticker per car (front window)

### Finals

- 3 final rounds for 'A' Mains
- 1-3 final rounds for 'B' and lower mains (time permitting)
- 1 warm-up lap then 5 minutes per final round + final laps
- Maximum 10 drivers per A Main (higher numbers possible in B and lower mains)
- 1 Number sticker per car (front window)
- All finals will have 3 mains. (time permitting)

### Car Numbers

- All cars to be fitted with a number sticker on the front screen during all qualifying, racing and controlled practice.
- Driver's responsibility to ensure correct numbers are fitted so they can be scrutineered correctly after their race.

## Marshalling

- Drivers must be available for marshalling the race following theirs.
- **Marshals shall remain at their post until relieved by the next marshal to avoid any delays. Raise your hand if you have not been replaced by the next marshal and one shall be appointed to your post.** Any marshal who leaves their post empty may be disqualified at the discretion of the Race Director.
- A table will be supplied at the scrutineering tent for cars and transmitters so marshals can promptly move into position.
- It is the driver's responsibility to find a backfill marshal if required.
- If drivers have an injury or disability preventing them from marshalling the entire event, please make this known to race control during the race brief.

## Results

- Race sheets will be printed and posted near race control, two screens will display race information in the pits and drivers stand.
- Live Time scoring will be available & accessible via the following link:  
<https://chargersrc.liverc.com/results/>

## Track Maintenance

- Track maintenance will be primarily carried out after 5pm each day, with urgent repairs done as needed – although repairs during race days are rarely required.
- Track will be swept and air-blown each morning before racing commences.

## Rain & Weather

- The schedule will be adjusted to accommodate any unfavourable weather to ensure completion of all 'A' finals for each class as a priority.

## Scrutineering

- All cars to be pre-scrutineered on Friday and approved.
- All race tyres must be checked in and recorded as part of the scrutineering process
- All **stock** class cars must be voltage tested prior to each race and must not exceed 8.400 volts. If a battery exceeds 8.400 volts, the driver will have the opportunity to reduce the voltage below 8.400 volts before the race begins. Repeat offenders may be issued with a penalty at the discretion of the Race Director.
- Cars and transmitters to be taken to the scrutineering zone after the race and collected after marshalling. Cars must not be touched by competitors until after they have been checked and released by the scrutineering officials.

**NOTE:** This list is not exhaustive – refer to the RCRA Rules for all rules that will apply at this event.

## Race Procedure

- After voltage testing (stock cars only), cars are to be placed in the pit lane in a designated car bay.
- Drivers may then make their way up the stairs and wait on a marked standing space.
- When the previous drivers have left the stand, you may make your way forward on the stand and choose your driving position. **Driving positions on the stand shall be open for Rounds 1 and 2, then per qualifying results after that.**
- After your race is completed, immediately make your way down the ramp to the scrutineering tent, placing your car and radio (still powered on) on the designated table, and go to your designated marshalling position.

## Control Tyres

The event uses **CONTROL TYRES** for sanctioned classes. All driven wheels must use a control tyre and an unmodified closed cell foam insert as per RCRA rules 9.1.

<b>2WD/4WD Buggy REAR</b>	PROLINE POSITRON (S3)	SKU:PRO8256203
<b>4WD Buggy FRONT</b>	PROLINE ELECTRON (S3)	SKU:PRO8240203
<b>Stadium Truck REAR</b>	JETKO POSITIVE (MED-SOFT)	SKU:JKO2102MS6228BG SKU:JKO2102DWMSG (PRE-GLUED)
<b>Short Course Truck REAR</b>	JETKO POSTIVE (MED SOFT)	SKU:JKO3106MS6223DB SKU:JKO3106CBMSG (PRE-GLUED)

### Tyre Limits (Maximum)\*

- 2WD Stock and Junior Buggy – 3 sets for rear (*no front control tyre*)
- 4WD Stock – 3 full sets
- 2WD Modified – 4 sets for rear (*no front control tyre*)
- 4WD Modified – 4 full sets
- Stadium Truck – 4 sets for rear (*no front control tyre*) – *see note below*
- Short Course Truck – 3 sets for rear (*no front control tyre*) – *see note below*

**NOTE FOR STADIUM TRUCK AND SCT:** As different cars and wheels have varying offsets affecting car width, it is the driver's responsibility that when using pre-glued tyres/wheels they are legal as per the RCRA Rules. It is recommended drivers glue their own tyres on known rims.

\* Practice tyres are excluded from the numbers above.



## Tyre Purchasing

Chargers RC will not be supplying tyres directly for the event.

We recommend tyres be purchased through the event sponsor **Campbelltown Hobbies**, alternatively our club sponsors who supply both Proline and Jetko tyres.

## Tyre Cleaning

Only regularly available detergent-based cleaners and water can be used to clean tyres (e.g. Simple Green). The use of solvents to clean the tyre bead before glue application is permitted. (RCRA Rule 9.6.6).

**NOTE: It is advised to put a dot of glue over the compound mark to preserve it for ease of scrutineering on race day.**

## Punching Tyres

A maximum of two (2) holes may be punched in each tyre with a maximum hole diameter of 4mm.

## Inserts

**Inserts MUST be the Closed Cell foam as supplied with the currently produced version of the control tyre.** No other inserts shall be allowed. Control tyres using an approved closed cell foam insert only may be modified by way of no more than two external vent holes of a diameter no greater than 4mm each.

Short Course Truck must use the Closed Cell inserts as supplied with the tyre. No other inserts shall be allowed. Modifying the insert **IS** allowed.

Pre-glued tyres/wheel for Stadium truck and Short Course Truck is allowed.

## Additive

The use of any oil or petroleum based compound for the purpose of treating the tire is prohibited. Only regularly available detergent based cleaners and water can be used to clean the tires. The use of solvents to clean the tire bead before glue application is permitted.

## Tyre Warmers

The use of tyre warmers is strictly prohibited.



## Motor and ESC Requirements

Below is a summary of the motor and ESC requirements for the event. It is strongly advised you refer to the **RCRA 2023 EP Off Road General and Technical Rules** for further information to ensure your Motor and ESC meet sanctioned event requirements.

Class	Motor and ESC Requirements
2WD Junior Stock Buggy 2WD Stock Buggy	17.5T Approved Brushless Motors & Approved ESC (blinky)
2WD Modified Buggy	Approved Brushless Motors & Approved ESC
4WD Stock Buggy	13.5T Approved Brushless Motors & Approved ESC (blinky)
4WD Modified Buggy	Approved Brushless Motors & Approved ESC
2WD Stadium Truck	Approved Brushless Motors & Approved ESC
2WD Short Course Truck	10.5T Approved Brushless Motors & Approved ESC (blinky)

## Transponders

Our LiveTime system will only identify MyLaps RC4 generation transponders. AMB, AMBrc and non-MyLaps branded transponders (e.g MRT) are not supported at our track.



RC4



RC4 Pro



## Rules & Regulations

This event will be run in accordance with all RCRA EP Off Road General and Technical rule. The rules below are a summary only and not exhaustive. You must refer to the RCRA website for the full set of rules that will govern this sanctioned event. Refer [2023 General and Technical Rules](#).

**To enter this event, you MUST be a current financial member of an RCRA affiliated club.** International competitors are welcome to enter. International competitors must be members of organisations who are ultimately affiliated with IFMAR.

Driver Aids are restricted per Rule 9.2 in the RCRA 2023 EP Off Road General and Technical Rules. **Use of restricted aids will result in disqualification.**

### General Rules

All competitors, mechanics, and guardians of junior competitors must read and understand the [2023 General and Technical Rules](#) on the RCRA website, as well as the [RCRA Code of Conduct](#) document. Entry into this event acknowledges your acceptance of the rules and specifications within the aforementioned documents.

- Put your safety first.
- Your Marshall point will be your car number. Discuss any marshalling concerns with the Race Director.
- Marshals must be present at their marshalling point at the “30 seconds” call wearing their fluorescent vest, and enclosed shoes. Failure to do so will attract a penalty at the Race Directors discretion (lose best qualifying result and issuing of an official warning per (RCRA 8.2.7.1) unless the Race Director has been consulted in advance. This is to assist adherence to the schedule, and for safety.
- Marshals will pay attention to their corner. Marshal how you wish to be marshalled.
- **Marshals shall remain at their post until relieved by the next marshal to avoid any delays. Raise your hand if you have not been replaced by the next marshal and one shall be appointed to your post.** Any marshal who leaves their post empty may be disqualified at the discretion of the Race Director.
- Avoid all distractions to respect fellow competitors. Do not obstruct the vision of drivers.
- Junior drivers (12 years and under) *should* marshal with an adult. Very experienced junior Marshall’s may marshal independently at the discretion of the host club (safety permitting). Please see the race director for approvals.
- All cars must be pre-scrutineered prior to the commencement of the event with indication markings of such remaining present throughout the event.
- Always follow the direction of officials, particularly the Referee and Race Director.
- Observe instructions of the Referee immediately, and without disruption. Clarifications may be sought afterwards.
- Corner cutting is not allowed and will attract warnings or penalties.
- All batteries must be 2S Li-Poly Hard Case and be on the approved battery list by [BRCA](#) or [ROAR](#).

- Batteries **MUST** be removed from the car and charged in a LiPo sack.
- Over-charging of batteries will be penalised where in breach of the RCRA ruleset. Batteries for stock cars will be checked before every qualifier and race. **Max 8.40V charged.**
- Driver coaching is strictly prohibited, any communication with any driver by any team member during a race will result in that team's driver being disqualified.

### Stock Class General Rules

- Blinky or zero timing brushless ESCs must be on the approved zero timing ESC listing from [BRCA](#) or [ROAR](#).
- ESC must 'flash' or 'blink' when turned on as described in the approved list
- Motor must be on the approved [BRCA](#) or [ROAR](#) list
- Fully charged battery must be at or below 8.400V. Maximum charged temperature shall be ambient temperature +/- 5 deg C
- Any battery presented for testing above 8.400V may be allowed to discharge their battery at the discretion of the scrutineer within a small tolerance. Repeat offenders and more experienced drivers will not be tolerated.

### Behaviour Rules

- Chargers RC will not tolerate any form of verbal or physical abuse including via social media. Anyone who engages in this kind of behaviour will be removed from the competition.
- This competition is also subject to the RCRA Code of Conduct
- No Smoking/vaping in the pit area or out the front of the drivers stand and pit area. A designated area is available near the public toilet block.
- No alcohol or illicit drugs are to be consumed during the event. Anyone found doing such will be asked to leave.
- Stealing and vandalism is an offense, anyone found doing so will be dealt with by the committee and reported to police.
- Keep your pit area clean. There are bins available within the facility, please ensure they are used.
- All penalties will be at the discretion of the Race Director.

### Competitor Responsibilities (Refer RCRA 2.9)

- The Competitor fully accepts that they will act responsibly, in a sportsmanlike manner and within the rules of the event and the RCRA Code of conduct. 2.9.2
- The competitor fully accepts that penalties, including disqualification and possible sanctioning from future State, National and International Championships may arise from breaches of the rules. 2.9.3
- The competitor is responsible for ensuring that they are a current financial member of an RCRA EP affiliated club. 2.9.4

- The Competitor fully accepts that they are responsible for their equipment, and that it is in a safe and useable condition, and meets any Local, State and National regulation required for that equipment (i.e., electrical equipment).

## Catering

Lunch will be available at the track each day and a daily menu will be posted with details of food available closer to the date. Pre-prepared food, packaged snacks and drinks will also be available all day.

Tea and coffee will also be available for purchase through a private operator on site.

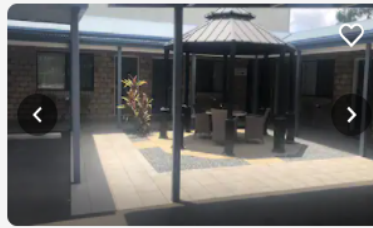
## Accommodation

Below is a list of accommodation options close to the track.



**Coopers Colonial Motel**  
Brisbane, 10.5 km from Carole Park

4.0/5 Very good (336 reviews)



**Darra Motel and Conference Centre**  
Brisbane, 5.83 km from Carole Park

Fully refundable  
Reserve now, pay later  
4.5/5 Wonderful (109 reviews)



**Johnson Road Motel**  
Brisbane, 10.5 km from Carole Park

Fully refundable  
4.5/5 Wonderful (111 reviews)



**Centenary Motor Inn**  
Brisbane, 6.98 km from Carole Park

Fully refundable  
3.5/5 Good (111 reviews)



**Browns Plains Motor Inn**  
Brisbane, 11.48 km from Carole Park

Fully refundable  
4.6/5 Wonderful (154 reviews)



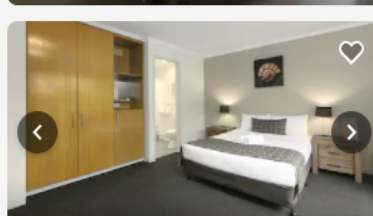
**Oxley Motor Inn**  
Brisbane, 7.53 km from Carole Park

Fully refundable  
3.8/5 Good (178 reviews)



**Rocklea International Motel**  
Brisbane, 11.85 km from Carole Park

3.9/5 Good (225 reviews)



**Mt Ommaney Hotel Apartments**  
Brisbane, 8.3 km from Carole Park

Fully refundable  
4.0/5 Very good (157 reviews)



**Moorooka Motel**  
Brisbane, 13.47 km from Carole Park

3.6/5 Good (290 reviews)



**Acacia Ridge Hotel Motel**  
Brisbane, 10.42 km from Carole Park

3.3/5 (91 reviews)



## Other Details

- Camping in Andre Rippoll Park is not permitted.
- Toilet facilities will be available at the track. There is a permanent shared disabled access toilet and additional portable toilets will be onsite. Please ensure that you keep these facilities clean for the use by all race day participants and spectators. No cleaning cars or tyres in the facility basins.
- Tables and chairs will be provided for interstate/travelling drivers if requested on the entry form.

## Contact

For any further information, please contact the club via email at [hello@chargersrc.net](mailto:hello@chargersrc.net)